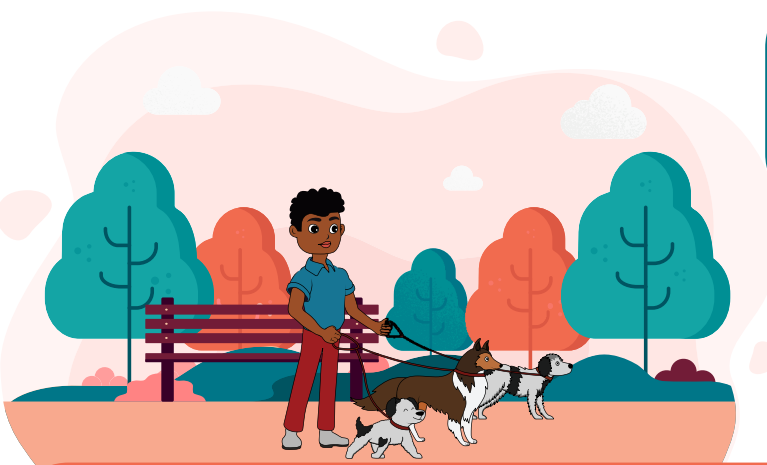


Creature Connections Behavior Alliance, llc



Positive Reinforcement Dog Training

13 McHugh Avenue, Billerica, MA 01821

www.creatureconnections.net

info@creatureconnections.net

978-804.2498

GETTING A NEW PUPPY CHECKLIST

ESSENTIAL SUPPLIES

- Identification Tags
- Collar and a Harness & Leash
- Food and Water Bowls (Slow Bowls)
- Healthy and Age Appropriate Dog Food (Work with Breeder/Vet)
- Dog Food Storage
- Waste bags and Holder

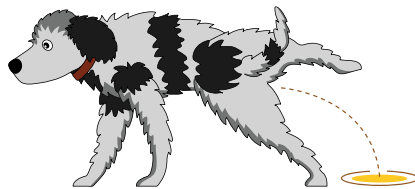


AT HOME GROOMING

- Brush (Slicker, Soft & Metal Comb)
- Deshedder Brush
- Grooming Wipes
- Toothpaste and Toothbrush
- Dog Shampoo & Conditioners
- Nail Clippers

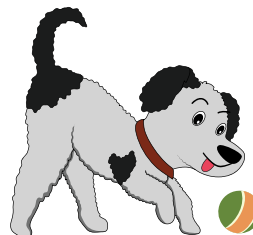
POTTY TRAINING & CLEANERS

- Potty Pads
- Enzyme Spray
- Vinegar & Water Spray
- Vacuum and Carpet Cleaner
- Deodorizing Spray
- Washable Rags
- Poop Bags / Scooper / 5 gal bucket



CONFINEMENT & COMFORT

- Puppy Crate
- Play pen or Baby Gates
- Outside Fencing or Play area
- Blankets or Matt for Crate



HEALTH CARE & OTHER

- Microchip
- Choose a Veterinarian
- Choose a Pet Insurance
- Choose a Pet Sitter/Dog Walker
- Choose a Dog Groomer
- Embark DNA
- Puppy Vaccines & Boosters
- Heartworm, Flea & Tick Prevention
- Parasite Testing
- Puppy Supplements
- Emergency Kit/First Aid Kit (Wound Spray, Self Cling Bandages, Eye Wash, Tweezers, Styptic Powder, Blunt Scissors, Ear Cleaning Solution)
- Dog Cone, Muzzle
- 2% Hydrogen Peroxide (induce vomiting)
- Medical Records
- Important Phone #'s, Poison Control

TRAINING, TOYS & TRAVEL

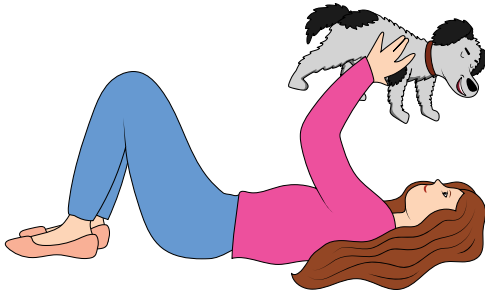
- Choose a Positive Reinforcement Dog Trainer
- Training Treats & Training Bag
- Training Clicker
- 30 foot Training Leash
- Chew Toys / Bitter Apple Spray
- Puzzle Toys & Brain Games
- Fetch Toys (Balls, Frisbee, Flirt Pole)
- Frozen Toys for Teething
- Enrichment Toys
- Crate for Car or Seatbelt system
- Collapsible Food & Water Bowls
- Travel Dog Bed
- Dog "GO" bag

PUPPY PREPARATION

SET YOURSELF UP FOR SUCCESS BY PRE-THINKING, PREPARING, AND MANAGING YOUR RELATIONSHIP, ENVIRONMENT, AND GOALS FOR LIFE WITH YOUR NEW PUPPY

A

BEFORE YOU GET YOUR PUP



1. Research in detail the type of pup you are interested in. Know if the Breed of pup is appropriate for your lifestyle.
2. Research your breeder, shelter, or other to make sure they are reputable & have references of experience & referrals that you can call.
3. Make sure you know what you are getting (puppy mill, backyard breeder)
4. Meet the people in charge of the care of your puppy (Are they in it for the money or for the animals?)
5. Evaluate health & safety (Is the kennels or house clean?)
6. Get DNA tests regarding parents (Embark) - health,
7. Get Lineage of parents (Show, Working, Companion)
8. Go thru the "Getting a New Puppy Checklist" and make sure you are

B

HOUSE RULES & MANAGEMENT

1. Set up your house rules, what do you want out of your pup
2. Is your pup a house companion or take everywhere kind of relationship you want?
3. Decide what is most important in your house (not on furniture, no jumping on guests, etc)
4. Prepare to manage the house rules (you don't want your pup practicing unwanted behaviors)



C

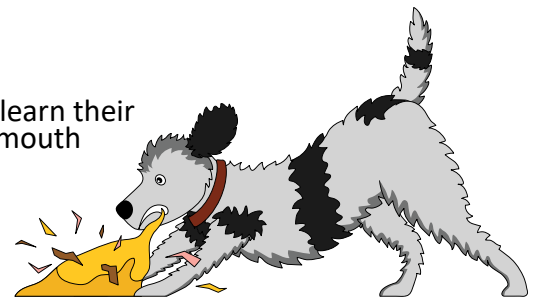
CLEAN UP

1. Be sure puppy area and your house is free of dirt and debris and pathogens
2. Clean & Disinfect House & Puppy Area

D

CHEWING

1. Puppies chew because of teething, are naturally inquisitive and learn their environment much like a toddler, by putting everything in their mouth
2. Remove all items that can be chewed or ingested
3. Remove all Shoes, Laundry, Childrens Toys



E

DANGER

1. Protect your investment, in not only your puppy but your stuff. Puppies, just like a toddler will find things that they shouldn't have.
2. Remove all medications & put them in a cabinet
3. Remove all batteries, household cleaners, detergents, plant fertilizers
4. Remove all household plants from area and put them out of reach
5. Remove all cords or get cord covers to protect from shock, burns or worse.
6. Get a taste Deterant for furniture and refresh frequently

