



## CANINE STAGES OF DEVELOPMENT

### Did you know?

With every month of age = 1 human year, until a dog is 2 years old  
Then every additional year = 4 human years

### THINKING ABOUT 'HOW DOGS AGE' HAS CHANGED ?

The old saying "for every year a dog is alive equates to 7 human years", has been proven this false. If we think about it logically. What 7 year old little girl do you know that can have a baby? It just doesn't happen. However, a 1 year old female dog can have puppies. During their first 2 years we see clear development phases that equate to a humans development. However, it happens much faster!



## EACH STAGE OF DEVELOPMENT OVER THEIR LIFE TIME HAS ITS BENEFITS AND IT'S CHALLENGES

### DEPENDENT STAGE - 0-2 WEEKS

Pups have taste and touch senses only eyes and ears are closed. They are dependent upon their mothers.

### WORLD INTRO STAGE - 2-4 WEEKS

Ears & Eyes begin to open. They begin teething. They become aware of their environment and their litter mates.

### TODDLER STAGE - 4-6 WEEKS

Pups begin to walk, and going the bathroom on their own. They begin to develop some independence. They also start learning social skills from their litter mates

### CRUTIAL DEVELOPMENTAL STAGE - 6-16 WEEKS

Pups begin to learn bite inhibition and begin learning from mom. At this point, training with their human is crucial. Most pups leave their families at 8 weeks.

**DONT WAIT UNTIL NEAR THE END OF THIS STAGE TO BEGIN TO SOCIALIZE.**

Critical Socialization Period - During this time pups need to socialize with the world. Places, Sounds, Textures, Things, People and Animals. Review how to socialize on the next page and what to introduce your pup to and when.

Fear Period - Pups can begin to establish fears of new things. Take care with introducing new things to the pup. Always make exposure training fun and light. Pups begin to be inquisitive and can be matched by increased apprehension towards unknown items.

### JUVENILE STAGE - 4-6 MONTHS

Pups advance in their energy levels and their curiosity. Adult teeth begin to replace baby teeth. This time is very difficult for both the pup and the human, as it is painful for the pup, and they try to alleviate this pain by chewing on everything.

### ADOLESCENT/TEENAGERS STAGE - 6-18 MONTHS

Pups begin to go through puberty. Hormones are raging. They become more independent. They also will struggle with boundaries and instinctual urges. There may be a slide back in obedience and challenging behaviors may arise.

### ADULT STAGE - 18 MONTHS - 8 YEARS

Pups personalities are now well established, and energy levels will begin to slow. If trained properly self-control will have been developed with continuous training.

### SENIOR STAGE - 8 YEARS +

Adult dogs will begin to show signs of age. They may sleep a lot more. You may start to notice coat changes, gray hairs begin to show up. Health concerns begin to arise. Close monitoring of nutrition and health care should be increased.

**SOCIALIZATION SHOULD NEVER STOP!  
Keeping your pup engaged with the world  
in a light and fun way, will keep unwanted  
behaviors at bay.**



## PUPPY SOCIALIZATION

### Did you know?

Puppies have 2 critical socialization and 2 fear periods before 16 weeks followed up by a 3rd fear period before they are a year old?

#### WHAT PEOPLE THINK PUPPY SOCIALIZATION IS

Meeting other dogs and Puppies

50%

Meeting Friends

20%

Meeting Strangers

10%

Going to the Pet Store

10%

Car ride to the Vet & Home

10%



#### WHAT PUPPY SOCIALIZATION ACTUALLY IS.

Locations & Environments (Stores, City, Playgrounds, Vet Office, Grooming Salon, etc.)

14%

Sounds (Equipment, Dropping Things, Fireworks, Emergency Sounds, etc)

14%

Surfaces & Textures (Gravel, Mulch, Slippery Surfaces, Grass, Soil, etc)

12%

Being Relaxed and Focused around Dogs

12%

Being Relaxed and Focused around Humans

12%

Things (Vet tools, Grooming tools, Kids Toys, Mirrors, Fountains, Fans, Vacuums, Yard Decorations, etc

8%

Equipment (Household Appliances, Yard Equipment, Dog care, etc)

8%

Events (Kids playing, Emergency, Construction, Parties, etc)

5%

People (Old, Young, Disabled, Colors, Sizes, Sexes, etc)

5%

Handling (Paws, Ears, Mouth, etc) For Grooming & Vet Care

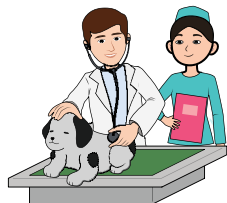
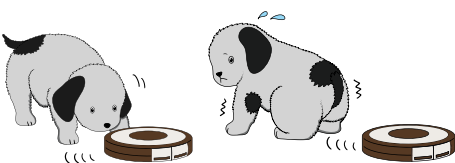
5%

Smells (Burning, Food, Cleaning, people, etc.)

3%

Meeting Animals (Cats, Dogs, Birds, Rodents, Reptiles, Farm, etc)

2%



PUPPIES NEED GUIDANCE NOT CORRECTIONS when learning about how to live in the Human World

#### TEACH YOUR PUP EARLY WITH INTRODUCTIONS TO:

- Locations
- Sounds
- Surfaces & Textures
- Things
- Equipment
- People
- Animals
- Smells

#### PUPPIES NEED TO SOCIALIZE & HAVE APPROPRIATE PLAY with

- Puppies/dogs
- Human Children
- Human Adults



#### KEY POINTS:

- Introduce your pup to the above list.
- Start as soon as you get your pup.
- Begin at 8-9 weeks and continue through life.
- Crutial Socialization Period ends at 16 Weeks.
- Make introductions fun and reinforcing.

